



COMPUTER SYSTEM SERVICING G10
QUARTER 3 – WEEK 6: INSTALLING DEVICE DRIVER

Name of Learner: _____
Grade & Section: _____

Date: _____
Teacher: _____

MOST ESSENTIAL LEARNING COMPETENCY (MELC): Install Application Software based on software installation guides, end-user requirements and software license agreement. *TLE_IACSS9-12ICCS-IIIa-e-31*

Objectives:

1. Identify the methods of installing a Device Driver
2. Learn how to properly install a Device Driver to restore computer system functionality
3. Develop the student’s decision-making skills by challenging the student’s thinking skills on why there is a need to install a Device Driver



TEACH ME

Learning Task 1:

A driver is a software that a device uses to work with your PC. When your device is not working properly, you can check if the driver is installed correctly. Faulty drivers could always be the cause. To fix the problem, you need to update the driver. Windows can update the driver automatically. For some devices especially external devices, you need to install the updated drivers yourself, then you need to download the driver manually.

Picture it out!

Look closely on the picture. Can you make a conclusion on what the image is all about?



<https://geek-easy.com/2013/08/you-need-a-pro/>

Learning Task 2:

Device Driver is a group of files that enable one or more hardware devices to communicate with the computer’s operating system. Without drivers, the computer would not be able to send and receive data correctly to hardware devices, such as a printer. Hardware devices that are unknown by the operating system or that have features that are unknown by the operating system all require drivers (ex. modem, network card, sound card, video card, scanner, USB devices).

If the appropriate driver is not installed, the device may not function properly. An example is a computer mouse that usually works without drivers, it has more buttons than the traditional mouse and those extra buttons will not work until the drivers are installed.

List of Driver Download Sources

Downloading a driver is needed before you can update a driver for a hardware. Some of you probably have downloaded files before but downloading drivers is no different. The difficulty of it is by finding the right place to download the driver. There is driver download sources that exist but those are not created equally.

1. Download drivers direct from the manufacturer

The best place to download drivers for any hardware is direct from the hardware manufacturer. If you purchased a complete computer system, the driver download should come from your computer manufacturer’s website.

2. Download drivers from a driver download website

Driver download websites actually download drivers from the manufacturer, organize them, and then make the drivers available for download to their visitors.

3. Use Windows Update as a driver download source

The drivers are downloaded and installed automatically as part of the Windows Update process. Windows Update should not be the only source for driver downloads. The common problems in drivers are the availability and most often they are not the updated versions.

4. Download drivers from third-party developers

Driver developers are not usually affiliated with the hardware device manufacturer or with the operating system company. A programmer may develop a driver specifically designed to help the software work with a particular piece of hardware. These kinds of drivers cannot be freely available for download.

Methods of Installing Device Drivers

Admins can install device drivers on a server in four ways:

1. **Running the Setup.** Device drivers are automatically installed for all detected devices during installation on the server computer.
2. **Starting the computer.** Whenever the server is started, new devices are detected and their device drivers are automatically installed
3. **Scanning for new hardware.** Add/Remove Hardware Wizard can be used to perform the hardware-detection process and desired device driver installation
4. **Manual installation.** You can use the Add/Remove Hardware Wizard to specify the device you want to install, or you can right-click the .INF file that comes with the driver and choose Install.

Note: You must have administrative privileges on the server to install device drivers.

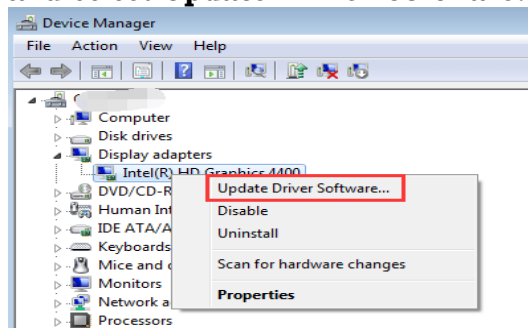
Download the Driver Manually

To download new drivers, go to PC manufacturer's website or device manufacturer's website. Driver updates are often available in the Support section of their website. If you are using a branded computer, it is recommended that you go to the PC manufacturer's website to check for the latest driver first, as they may customize the driver. You are required to use the PC model and the operating system to download the correct driver. Usually, the PC model can be found on the machine.

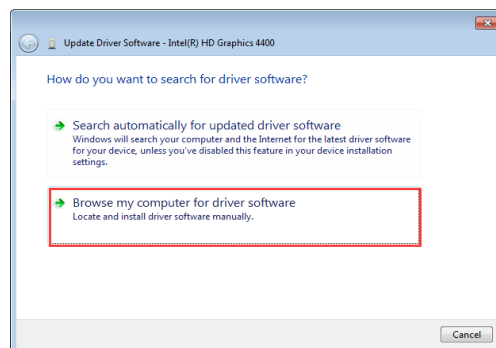
How to Install the Driver

The downloaded driver file will be an executable file (file name ends in ".exe".) or a zip file (file name ends in ".zip"). For an executable file, to install the driver, you just need to double-click on the file and follow the on-screen instructions. For zip file, unzip it and find the executable file in the archive.

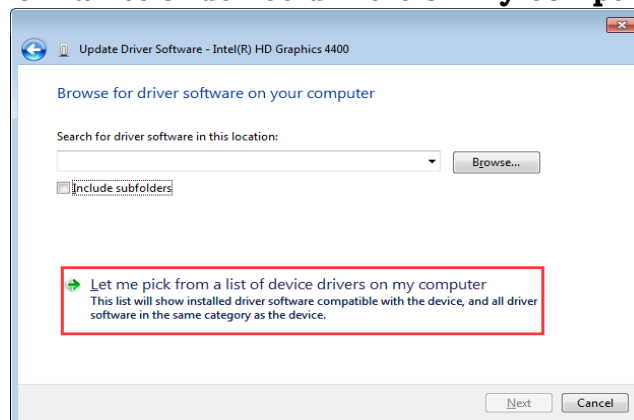
1. Go to **Device Manager**.
2. Find the device that needs to install a driver (ex. video card).
3. Right-click on the device and select **Update Driver Software...**



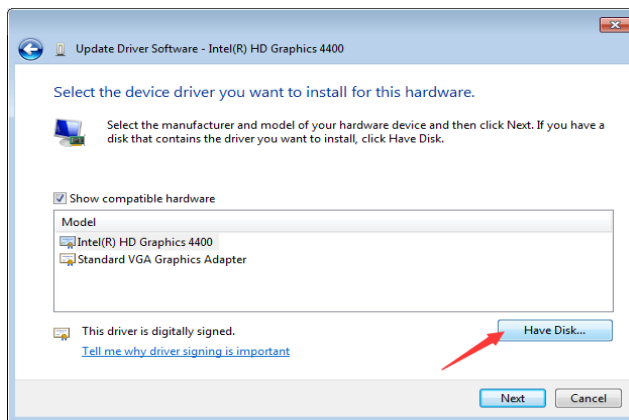
4. Select **Browse my computer for driver software.**



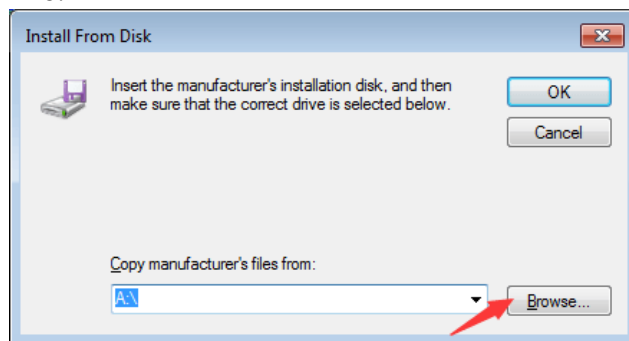
5. Select **Let me pick from a list of device drivers on my computer.**



6. Click **Have Disk...** button.



- Click **Browse...** button. Navigate to the folder where you saved the downloaded driver file and browse the .inf driver file.



- Click **OK** button then **Next** button to finish the installation.

Updating and Removing Device Drivers

Administrators often must update the existing device drivers or remove them. To update a device driver:

- Start Device Manager by typing 'Devmgmt.msc' in the Run dialog box.
- Right-click the desired device and select Properties.
- Click the 'Driver' tab and then click the Update Driver button.

To remove a device:

- Start Device Manager by typing 'Devmgmt.msc' in the Run dialog box.
- Right-click the desired device and select Properties.
- Click the 'Driver' tab and then click the Uninstall button.

Note: Removing the device does not actually delete the device driver itself. What it does is remove references to the driver from the Registry so that the computer does not load the driver.



LEARN MORE

Learning Task 3:

SOLVE A CRYPTOGRAM

Directions. Each letter in the phrase has been replaced with a random letter or number. Try to decode the message.

A	B	C	D	E	F	G	H	I	J	K	L	M	N	O	P	Q	R	S	T	U	V	W	X	Y	Z
8	20	16	17	9	22	6	3	2	11	24	14	21	10	7	5	4	1	12	18	26	13	19	15	23	25

A N A N A A N
 — 21 — 8 — 10 — 26 — 8 — 14 — 2 — 10 — 12 — 18 — 8 — 14 — 14 — 8 — 18 — 2 — 7 — 10

Learning Task 4:

Directions: Create your own WORD SEARCH PUZZLE by collecting ten (10) words related to the topic. Remember to avoid too many short words. Decide on your grid size and difficulty level. Use a separate sheet of paper.



SUMMATIVE ASSESSMENT

A. WRITTEN TASK

I. Directions. Read each question and their corresponding answers carefully and completely. Choose the answer that best fits the statement.

- _____ 1. What is a software that a device uses to work with your PC?
A. Device B. Driver C. Plug and Play D. Tool
- _____ 2. Ysabelle is installing a printer. What program will she need to get the printer to work with her computer?
A. Controller B. Device Driver C. Device Manager D. Tool
- _____ 3. Which of the following methods makes new devices detected and the device driver automatically installed?
A. Manual installation C. Scanning for new hardware
B. Running the Setup D. Starting the computer
- _____ 4. Which of the following methods uses Add/Remove Hardware Wizard?
A. Manual installation C. Scanning for new hardware
B. Running the Setup D. Starting the computer
- _____ 5. What do you need to do to improve the efficiency and performance of a driver?
A. Hide B. Uninstall C. Update D. Use

II. Directions. Read each statement carefully and fill in the blank(s) with the correct answer.

- 1. A device is disabled without a _____.
- 2. The _____ and the _____ is needed to download the correct driver.
- 3. The best place to _____ drivers for any hardware are direct from the hardware manufacturer.
- 4. A _____ may develop a driver specifically designed to help the software work with a particular piece of hardware.
- 5. Whenever the _____ is started, new devices are detected and their device drivers are automatically installed.

B. PERFORMANCE TASK

Directions. Create your own Device Driver installation flowchart. Make sure to indicate all the important part of the process. Use proper flowchart symbols. Use a separate sheet of paper.

Rubrics for Scoring				
	4	3	2	1
Following directions	All directions were followed.	You followed most directions.	You followed some directions.	None of the directions were followed.
Use of creativity	You used your own ideas and imagination	You used your own ideas most of the time.	You used some imagination.	You did not use your own ideas or imagination.
Effort	You took your time and worked hard	You worked hard for most of the time	You put a small effort	You rushed through and did not work hard
Quality of work	Very clear, complete and concise.	Clear, mostly complete and concise	Mostly clear and could be a little more concise	Unclear, incomplete and not concise

References:

<https://searchenterprisedesktop.techtarget.com/tip/Device-drivers-Installation-and-configuration>
<https://www.drivereasy.com/knowledge/how-to-install-drivers/>
<https://www.pinterest.ph/pin/411305378465305980/>
<https://www.computerhope.com/jargon/d/driver.htm>