



**COMPUTER SYSTEM SERVICING G10**  
**QUARTER 2 –WEEK 3: Install Operating System (OS)**

Name of Learner: \_\_\_\_\_

Date: \_\_\_\_\_

Grade & Section: \_\_\_\_\_

Teacher: \_\_\_\_\_

**MOST ESSENTIAL LEARNING COMPETENCY (MELC):**

- Install Operating System (OS) in accordance with established installation procedures and to comply with end-user requirements CODE: TLE\_IACSS9-12ICCS-IIa-j-30

**Objectives:**

1. Determine the different versions of Windows 8 and Windows 10.
2. Differentiate the versions of Windows 8 and Windows 10.
3. Evaluate the different version of Windows 8 and Windows 10.



**Learning Task 1:**

What's going on in this picture? Look closely at the image below and identify the difference that you can see.



**Learning Task 2:**

**Windows 8 (2012)**

In October 2012, Microsoft launched its latest desktop operating system, Windows 8. It is the first Microsoft's OS, which will be used on tablets and smart phones also. Microsoft removed the start menu to make Windows 8 touch-friendly.

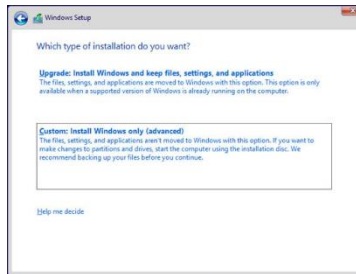
**Different Version of Windows 8**

1. **Windows RT** - Designed for long-battery life, this version only comes preinstalled, mostly on touchscreen tablets and laptops. It runs the Start screen and apps, but its limited desktop won't run to own Windows programs. It includes versions of Microsoft Word, Excel, PowerPoint, and OneNote.
2. **Windows 8** - This version includes the Start screen, apps, and a full-featured Windows desktop that can run most Windows programs.
3. **Windows 8 Pro** - This version features everything from the Windows 8 version. It is use by small businesses for encryption, extra networking features, and similar tools.
4. **Windows 8 Enterprise** - Microsoft sells this large business version in bulk to large businesses.

**How to Install Windows 8**

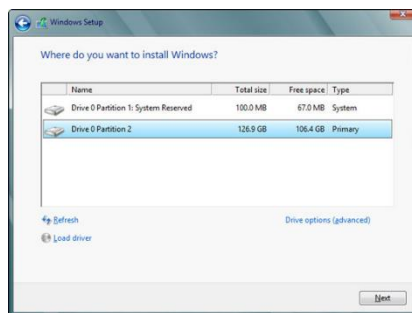
1. Insert the Windows installation disk in the DVD drive, or the installation USB in a USB port. *Choose Start→ Shut Down to go through a full shutdown.*

2. Power off the PC, wait at least a full minute, and then turn on the power. *If the PC can start (or boot) from the DVD drive or USB drive, you see text on the screen that says something like Press any key to boot from CD or Press Esc to choose boot device.*
3. Press whatever key is recommended. *If the PC doesn't offer to boot from the DVD drive or USB stick, you have to look in your PC's documentation for the correct setting in your PC's BIOS. If you're not familiar with your PC's BIOS, go to the website for your PC manufacturer and search for the terms change boot sequence.*
4. When the PC boots, you may be asked if you want to go online to get the latest updates and click Next.
5. In the Windows Setup screen, change the language, click Next, and then click Install Now. When the installer prompts for the product key, enter it. When a license terms screen appears, accept it.



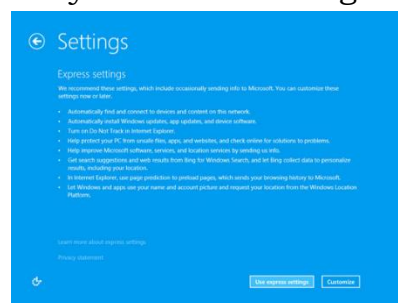
<https://www.dummies.com/computers/operating-systems/windows-8/how-to-install-windows-8-1-from-a-dvd-or-usb-drive/>

6. To wipe everything and start fresh, click Custom Install Windows Only (Advanced). *The installer asks you where you want to install Windows.*



<https://www.dummies.com/computers/operating-systems/windows-8/how-to-install-windows-8-1-from-a-dvd-or-usb-drive/>

7. If there is more than one entry in the upper box, choose Drive Options (Advanced), click each entry in the upper box, one by one, and click on the link that say Delete. When you're done, click Next.
8. Choose a background color for the tiled Start screen, type a name for the PC and click Next. Windows asks about your initial settings.



<https://www.dummies.com/computers/operating-systems/windows-8/how-to-install-windows-8-1-from-a-dvd-or-usb-drive/>

9. If you trust Microsoft, choose Use Express Settings. If not, choose Customize.
10. If you just upgraded from Windows 7, provide your account's password.
11. Set up SkyDrive. If given a chance to set up SkyDrive automatically. Click Use SkyDrive.
12. Click Finish and stand back.

## Windows 10

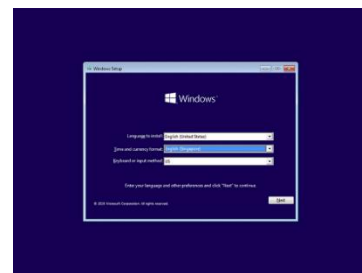
It is an operating system developed by Microsoft. It was described as an "operating system as a service" that would receive ongoing updates to its features and functionality, augmented with the ability for enterprise environments to receive non-critical updates at a slower pace or use long-term support milestones that will only receive critical updates, such as security patches, over their five-year lifespan of mainstream support.

## Windows 10 will be released in following editions:

- **Windows 10 Home** – It is the main edition of Windows 10 which will be available in all Desktop PCs, laptops, tablets, hybrid (2-in-1) devices, etc.
- **Windows 10 Pro** – It is useful for small businesses.
- **Windows 10 Mobile** – It is available for mobile phones and small tablets having screen sizes under 8 inches.
- **Windows 10 Enterprise** – It is available for medium and large sized organizations.
- **Windows 10 Enterprise LTSC (Long Term Servicing Branch)** – It is similar to Windows 10 Enterprise edition but it'll not receive any feature updates which makes it the most lightweight and stripped-down edition of Windows 10.
- **Windows 10 Mobile Enterprise** – It is developed for smartphones and small tablets.
- **Windows 10 Education** – It is designed to meet the requirements of school staff, administrators, teachers and students.
- **Windows 10 IoT Core** – It is special version for small footprint, low-cost devices like gateways.

## How to Install Windows 10

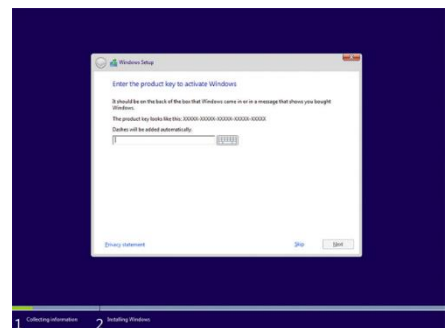
**Step 1:** This is the first screen you will see if you install Windows 10 using a bootable USB flash drive or DVD.



**Step 2:** Click install Now.

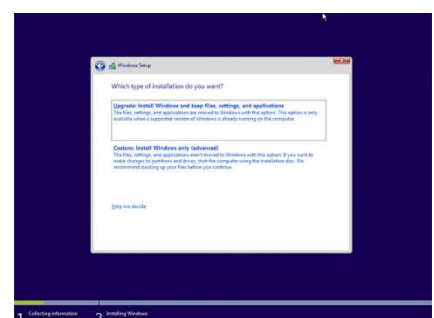


**Step 3:** Enter product key which can be found on your online order info, in the confirmation email for your purchase, or on the DVD packaging.

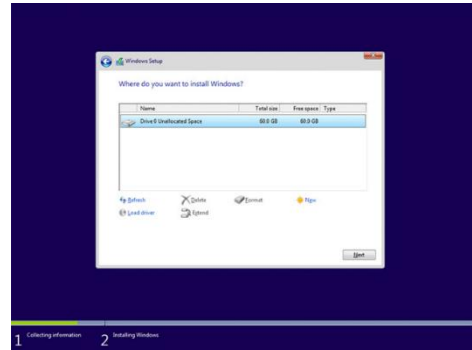


**Step 4:** Accept the license terms.

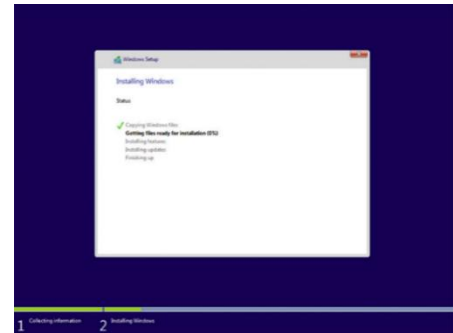
**Step 5:** Next, choose to do either an upgrade (files, settings, and apps are moved to Windows) or a custom install (files, settings, and apps aren't moved).



**Step 6:** Select the drive to install Windows 10 on. You can format a drive here as well.

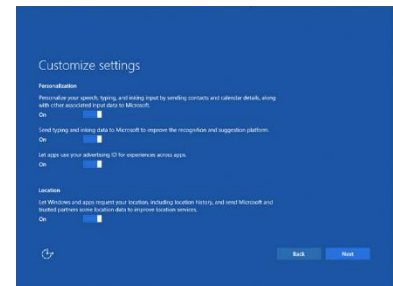


**Step 7:** Now, you wait.

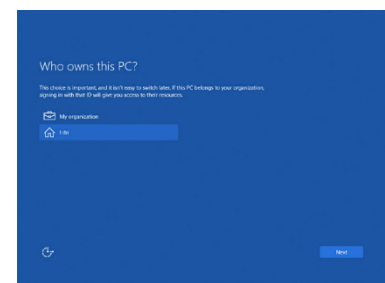


**Step 8:** Before starting using Windows, there are some personalization, location, browser and protection, and connectivity and error reporting settings that can adjust.

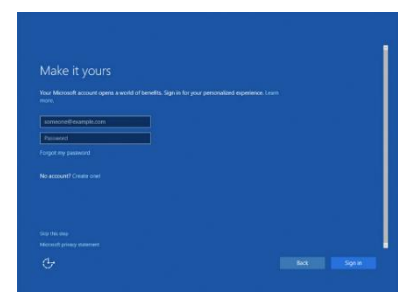
**Step 9:** Choose to customize the settings, the first page deals with your contact, calendar, input, and location data. The next page deals with browser data, connectivity, and error reporting. Again, read these carefully and toggle the switches accordingly.



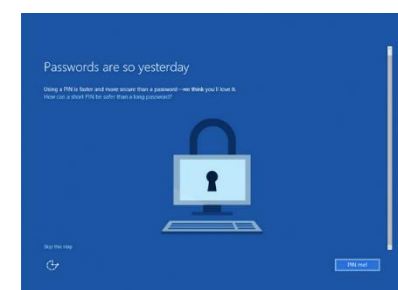
**Step 10:** Next, specify who's the owner of the device. Choose to sign in with your company ID, which will give you access to your company's resources.



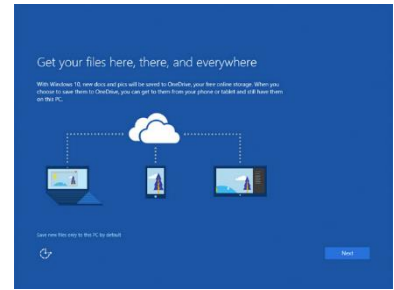
**Step 11:** Microsoft really wants you to sign in to Windows 10 with your Microsoft account.



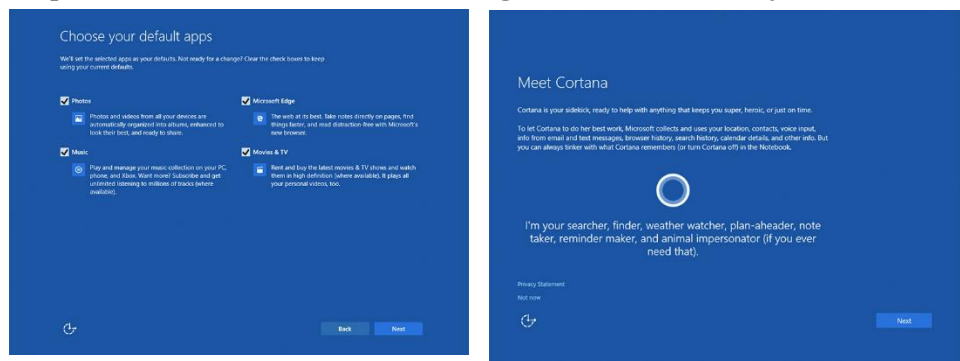
**Step 12:** Instead of signing in using your Microsoft account password, the option to create and use a short PIN instead.



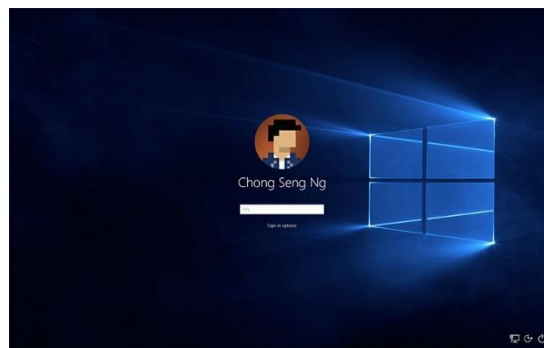
**Step 13:** Windows 10 will save new documents and pictures to OneDrive. Click Next to continue.



**Step 14:** If the Cortana personal assistant feature is turned on, it allows Microsoft to collect and use their location; contacts; voice input; info from email and messages; browser history; search history; calendar details; and more.



Lastly, Welcome to Windows 10!



## LEARN MORE

### Learning Task 3:

**Directions:** SEQUENCING PROCEDURES.

Arrange the following procedures in their proper order. Use numbers to indicate their order of precedence. The first number is done for you.

Installing Windows 10

- 14 1. If the Cortana personal assistant feature is turned on, it allows Microsoft to collect and use their location.
- \_\_\_ 2. This is the first screen you will see if you install Windows 10 using a bootable USB flash drive or DVD.
- \_\_\_ 3. Windows 10 will save new documents and pictures to OneDrive. Click Next to continue.
- \_\_\_ 4. Click install Now.
- \_\_\_ 5. Instead of signing in using your Microsoft account password, the option to create and use a short PIN instead
- \_\_\_ 6. Enter product key which can be found on your online order info, in the confirmation email for your purchase, or on the DVD packaging.
- \_\_\_ 7. Microsoft really wants you to sign in to Windows 10 with your Microsoft account.
- \_\_\_ 8. Accept the license terms.

\_\_\_9. Next, specify who's the owner of the device. Choose to sign in with your company ID, which will give you access to your company's resources.

\_\_\_10. Next, choose to do either an upgrade (files, settings, and apps are moved to Windows) or a custom install (files, settings, and apps aren't moved).

\_\_\_11. Choose customize the settings

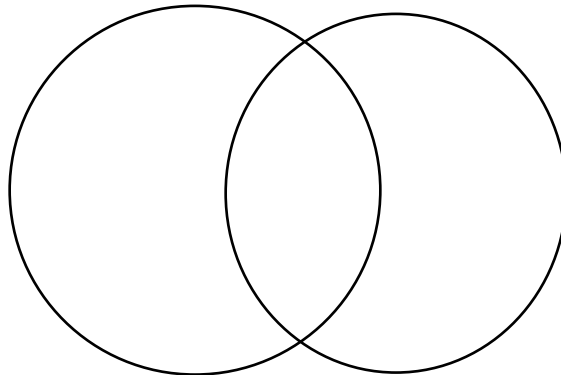
\_\_\_12. Select the drive to install Windows 10 on. You can format a drive here as well.

\_\_\_13. Before starting using Windows, there are some personalization, location, browser and protection, and connectivity and error reporting settings that can adjust.

\_\_\_14. Now, you wait.

#### Learning Task 4:

**Directions:** Using this Venn Diagram show the relationship of Windows 8 and Windows 10. Identify the similarities and differences of window 8 and windows 10



**EVALUATE NOW**

---

#### SSUMMATIVE ASSESSMENT:

##### A. WRITTEN TASK:

A. Matching Type. Match Column A to Column B

##### Column A

1. This version includes the Start screen, apps, and a full-featured Windows desktop that can run most Windows programs.
2. It is designed to meet the requirements of school staff, administrators, teachers and students.
3. Designed for long-battery life
4. It is useful for small businesses.
4. It is use by small businesses for encryption, extra networking features, and similar tools.

##### Column B

- A. Windows 10 Education
- B. Windows 10 Pro
- C. Windows 8 Pro
- D. Windows RT
- E. Windows 8



- B. Modified True or False: Write True if the statement is correct and if not write False and write the word that makes it wrong.
1. The first step in installing Windows 8 is insert the Windows installation disk in the DVD drive, or the installation USB in a USB port.
  2. Windows 8 was described as an "operating system as a service" that would receive ongoing updates to its features and functionality.
  3. The third step for Windows 8: Choose a background color for the tiled Browser screen, type a name for the PC and click Next.
  4. The sixth step for windows 8: To wipe everything and start fresh, click Custom Install Windows Only (Advanced).
  5. Step 5 in Windows 8 is change the language, click Next, and then click Install Now. When the installer prompts for the Sum key, enter it. When a license terms screen appears, accept it.

**B. Performance Task:**

In the box provided Illustrate the step-by-step procedure in installing Windows 8. **(Note: you may use diagram or screen shot and cut and paste on the box)**

**Rubrics for scoring**

<b>Rating</b>				
<b>5</b>	<b>4</b>	<b>3</b>	<b>2</b>	<b>1</b>
Write-up process follows the correct arrangement of idea. It is easy to understand, follow, clear, and precise.	Write-up process follows the correct arrangement of idea. It is easy to understand and follow.	Write-up process follows the correct arrangement of idea. It is easy to understand.	Write-up process follows the correct arrangement of idea. It is fairly easy to understand.	Write-up process is unorganized, difficult to understand and follow. It is visually unappealing.

References:

<https://www.dummies.com/computers/operating-systems/windows-8/how-to-install-windows-8-1-from-a-dvd-or-usb-drive/>

<https://www.askvg.com/list-of-windows-10-editions-skus/>

<https://www.dummies.com/computers/operating-systems/windows-8/the-four-versions-of-windows-8/>

---

Writer: Geraldine H. Lipata  
Content Editor/Language Editor: Francis Victor Medrano  
Evaluator/Validator: Divina S. Tumbaga